

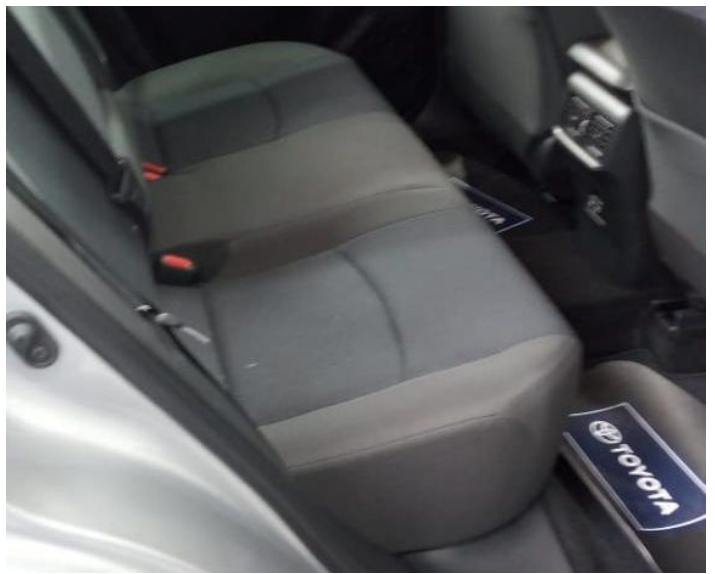
**2020 TOYOTA RAV4 LE FWD 2.5L GASOLINE 176
HP A/T**



Year	2020
Engine	2.5 L 4-cylinder engine, VVT-i Dual and ETCS-i
Transmission	8-Speed Automatic
Interior	Cloth
Seats	5

Gallery







Specifications

- 2.5 L 4-cylinder engine, VVT-i Dual and ETCS-i. gasoline
- Power: 176 HP @ 5,700 rpm
- Torque: 163 lb.-ft. @ 3,600-5,200 rpm
- Ignition System: Toyota Direct Ignition (TDI)
- 8-speed Automatic Transmission with ECT-i
- Drive modes: NORMAL / ECO / SPORT
- TRAC (Traction Control)
- VSC (Vehicle Stability Control)
- HAC (Hill Assist Control)
- Powertrain: FWD-2WD
- Reinforced unibody Frame
- Independent McPherson strut front suspension with coil springs and stabilizer bar
- Independent double wishbone rear suspension with coil springs and stabilizer bar
- Electric Power Steering (EPS)
- Turning diameter: 11 m
- Front brakes Ventilated discs
- Rear brakes Solid discs
- Anti-lock System (ABS)
- Electronic Brake Distribution (EBD)
- Brake Assist (BA)
- Smart Stop Technology (SST)
- Exterior Dimensions (mm): Total height: 1,685 / Width: 1,855 / Length: 4600
- Vehicle Weight (kgs): 1550
- Fuel tank (L): 55
- Passengers: 5
- Load capacity (Kg): 570
- 17 "Aluminum Wheels
- P225 / 65R17 tires
- P225 / 65R17 spare tire with Aluminum rim
- EXTERIOR
- Rear defroster
- Body-colored, flip-down side mirrors with defroster, power adjustment and turn signals
- BI-LED headlights with automatic on and off
- Body-colored front and black rear fascia
- LED daytime running lights
- Body-colored handles
- Black front grill
- INSIDE
- Manual air conditioning
- 6-way manual bucket driver seat
- 4-way manual bucket passenger seat
- Second-row passenger seat 60/40 fold-down bench with manual adjustment
- Reverse camera
- 12V connectors (3)
- USB connectors (3)
- Cruise control
- Day / night rear view mirror
- 4.2 "multi-information display
- Apple CarPlay® system
- AM / FM audio system with MP3 / WMA player, 7 "touch screen, USB, Mini Jack and 6 speakers
- Bluetooth® connectivity system and steering wheel controls
- First and second row windows with one-touch and power openers
- Fabric Seats
- Steering wheel with height and depth adjustment
- Alarm and immobilizer
- Driver's knee air bag
- Front airbags for driver and passenger (2)
- Side airbags (2)

- Curtain airbags for front and rear passengers (2)
- Height adjustable headrests
- Front and rear three-point seat belts
- Power Door Locks
- Rear door child locks
- Tire pressure monitoring system (TPMS)
- ISO-FIX system and Tethers



+1 (305) 710-4815



carlos@cedarsmotors.com



6380 NW 97th Ave, Doral, FL, 33178